

Heidi

Card Printer
with Laminator



SMARTER WAY TO PRINT ID

heidi.getgroup.com

Smarter



CP-51L

heidi.getgroup.com



The Heidi CP-51L Laminating Printer is a high-speed device designed to produce cutting-edge imaging and exceptional printing quality at a competitive cost per card. It is a very flexible solution made to work in a variety of user contexts and card-issuing scenarios. Simply deploying, operating, and maintaining Heidi CP-51L.

Way to Print ID



User-Friendly

Easy to use and maintain; simply plug and print.



One Step

Single or Dual-Sided Printing and Laminating



Durable Yet Affordable

Reliable operations, high-resolution printing offered at a reasonable price



Highly Scalable

An all-in-one printing solution with upgradable options, ribbons, and software.



Trusted Security

Contactless, and MS encoding for high-standard digital security compliance with EMV.



Smart Design

Compact size with a unique design, ideal for limited workspaces

Personalization

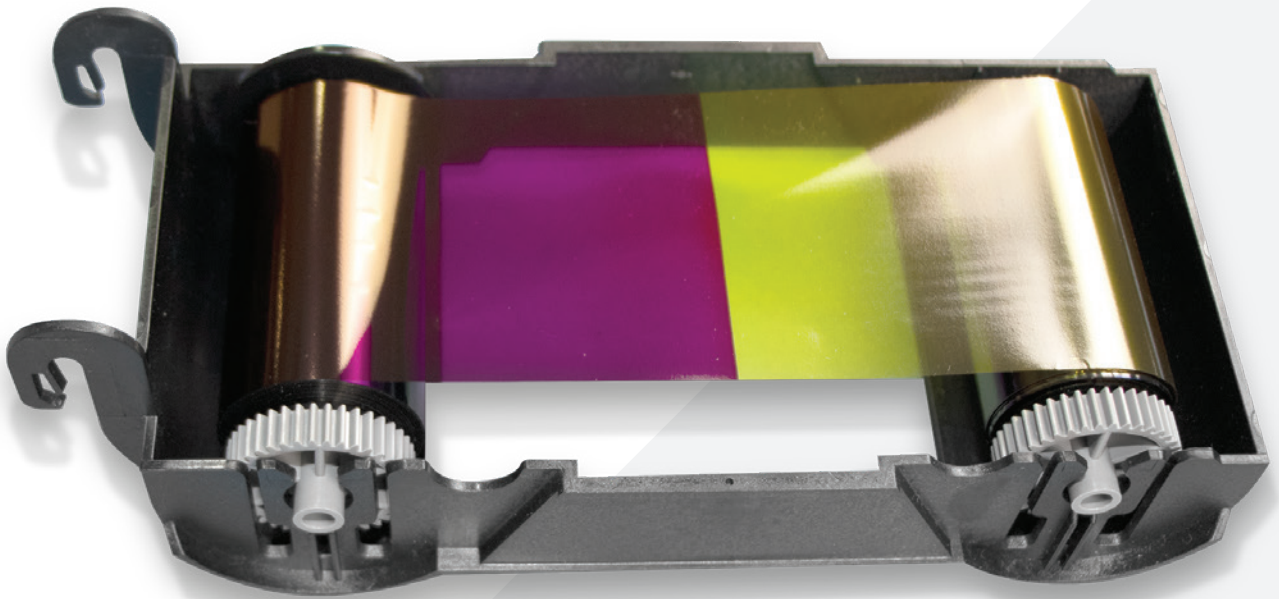
The CP-51L is a high-quality printer with 300 (Color & Mono), 600 & 1200dpi (Mono only), edge-to-edge printing on various types of cards and thickness with a wide range of ribbons.

Operation

All-in-one ribbon cassette and cleaning roller simplifies ribbon loading and cleaning processes. Easily operated LED indicators, buttons and instant system status LCD display.

GET Identity

This versatile, reliable and tool-rich card personalization system is trusted by public and private institutions across the globe, precisely and comprehensively assisting in the design and issuance of millions of highly secure ID cards. Suitable for simple student IDs, as well as complex cards such as access control and loyalty programs.



Performance

The built-in 64 MB memory facilitates the high-speed storing and processing of printing jobs.



CP-51L



Card Security

Heidi CP-51L provides multiple options to protect cards against tampering attempts:

- ▶ A secure and customizable watermark added within the printing process using standard ribbons
- ▶ A covert layer printed using an ultra-violet (UV) ribbon
- ▶ Smart card encoding
- ▶ Supports the secure global EMV standard, ensuring the cards are interoperable with the global payment infrastructure
- ▶ A secure and customizable holographic film

Technical Specs | CP-51L Specifications Sheet

Printing	Print Mode: Dual Sided
	Print Type: Direct Dye-Sublimation
	Print Area: Edge to Edge
	Resolutions: 300dpi (Color & Mono), 600 & 1200dpi (Mono only)
Card	Card Feeding: Automatic
	Card Size: ISO CR80 or ISO CR79 (Option-Factory installed)
	Card Thickness: 0.38mm (15mil) ~ 1.0mm (40mil)
	Card Type: PVC, PET, Composite PVC
Print speed	Monochrome: Max. 5 sec./card (720 cards/hour)
	YMCKO: Max. 17 sec./card (212 cards/hour)
	YMCKOK: Max. 22 sec./card (164 cards/hour)
Input hopper card capacity	100 Cards / 200 Cards with cover open
Output hopper card capacity	Front : 40 Cards / Rear: 100 Cards (Optional Rear-side Stacker)
Laminating	Mode Single & Dual
	Film (Clear & Holographic): 0.6mil, 1.0mil
	Speed (Simultaneous) 22 sec./card (YMCK, Single Lamination)
	Speed (Simultaneous) 32 sec./card (YMCKK, Single Lamination)
	Speed (One by One) 43 sec./card (YMCK, Single Lamination)
	Speed (One by One) 53 sec./card (YMCKK, Single Lamination)
Memory system	64MB RAM

Interface	2 Line LCD / 2 LED Buttons
Supported platforms	Microsoft Windows 7/ 8 /10, Mac OS, Linux
Communication	USB, Ethernet, WiFi (Option)
Power supply	Free Voltage (AC 100/ 220V, 50~60Hz)
Power consumption	96W
Temperature	15~35o
Humidity	35~70%
Physical lock	Input Hopper, Ribbon & Film (Optional)
Station Itself	Kensington Lock (Optional)
Dimensions	Milimeter: 675 (W) x 165 (L) x 210 (H)
Weight	Kg/Lbs Approx. 8.8 kg/19.4 lbs
Magnetic stripe encoder	ISO 7811 (Track I, II, III Read/ Write, HiCo/ LoCo), JIS II
Contact smart card encoder	ISO 7816 A/B/C Card, ISO 7816 1/2/3/4 Microprocessor Card
Contactless smart card encoder	ISO 14443 (Type A/ B), MIFARE, DESFIRE, iCLASS, ISO 18092(NFC), Felica
Certifications	CB, CE, FCC, KC, CCC



WHY GET GROUP

