



**CCTV**



# GET SURVEILLANCE

**INTELLIGENT CENTRALIZED  
MONITORING SYSTEMS**

[www.getgroup.com](http://www.getgroup.com)

200423

Security has become an indispensable aspect of operations and budgetary considerations for public and private institutions across almost every industry. Governments, enterprises, financial institutions, refineries, campuses, hospitals, residential areas and many more are increasingly utilizing CCTV and surveillance systems as a measure to counter and mitigate various known and unknown threats. With the advancement of technologies, GET Group has expanded its focus not only to capture and record incidences but also to study and analyze behavior.

GET Group offers modular surveillance solution comprising of multiple hardware components from leading providers around the world, operated on smart and intuitive software provided by GET Group to ensure seamless integration across all solution components whether they were existing or third-party systems to provide uninterrupted surveillance, behavioral analysis, and tool-rich video management.

## Working with GET Group

### Field experts for More Than 30 Years

With its vast experience, GET Group has developed a strong surveillance portfolio combining the latest technologies available in the market. In addition, GET Group boasts a team of experts with a successful track record of projects across the world in partnership with major public and private institutions.

### End-to-End Solution Provider

With many years of experience in the implementation of projects in collaboration with governments and private sector enterprises, GET Group is capable of designing a security solution based on the clients' specific requirements. GET Group offers not only installation and solution deployment services but also maintenance and support in different tiers. Our professional services extend to supporting your security team with 24/7 availability in highly critical areas whenever and wherever necessary.

### Partnerships with Industry Leaders and Manufacturers

GET Group works diligently and hand in hand with an extensive network of industry experts, thus guaranteeing software and hardware compatibility, quality, and conformity with most stringent industry standards.



## Professional Consultation

As part of GET Group's presales activities, our team does not only gather information but provides you with consultation services to guide you throughout the decision-making process. We are committed to helping you find the solution that best fits your requirements, infrastructure, and budget.

## Dedicated Technical Support

Through a team of certified professionals, GET Group offers its clients ongoing technical support and maintenance, thus guaranteeing uninterrupted services and the best possible allocation of resources. One of GET Group's core values is the continuous investment in training programs and human resources development, to ensure our clients are offered world-class services. The tailored approach we take to our solution-design process also means that our support team is best qualified to support your operations.



## Solution Design

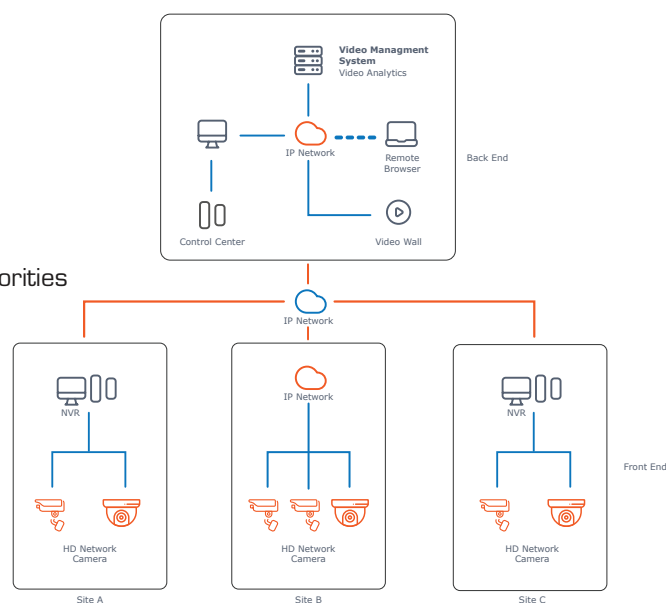
Safety measurements differ from an industry to another, and so do security objectives and requirements. GET Group studies the requirements of each project to provide a full-fledged solution with complete coverage of events occurring in different weather and light conditions, in line with industry standards and best practices, to shortlist and recommend the most effective and efficient components. We will manage the project from the early phases of conceptualization, through implementation and support.

### Main solution components include:

- ▶ Analog and IP Cameras
- ▶ Video Management Software
- ▶ Security Analytics and AI advanced features
- ▶ Digital and Network Video Recorders (DVR/NVR)
- ▶ Storage and Servers
- ▶ Network and Infrastructure
- ▶ Integrations with 3rd Party Systems
- ▶ Aftersales Support and Maintenance
- ▶ Legal Approvals from Security Regulators and Government Authorities

GET Surveillance addresses various business requirements, from a small retail store with a few cameras to a complex command and control center securing an entire city. At any given moment, authorized users can view remote video feeds, receive event notifications, and take immediate actions.

Our solution also integrates with other security systems, including but not limited to intrusion detection and access control systems; all linked to the command and control center.







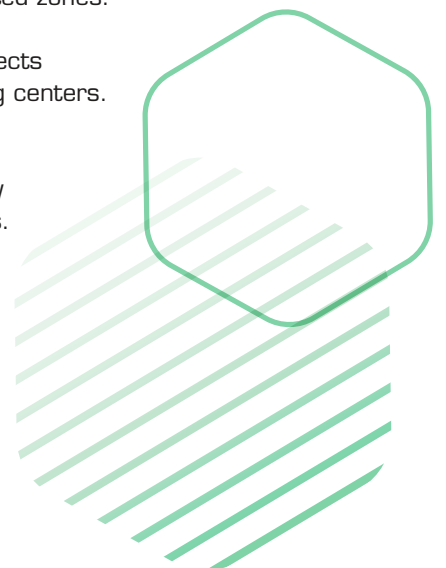
## Video Management: Beyond the Ordinary

GET Group's video management software enables users and administrators to store video output, set business rules and extract information and metadata. Our solution goes beyond conventional video management by empowering the user with smarter analytics and accurate recognition features based on AI and machine-learning.

## Video Analytics: Intelligence to Maximize Security

Enables users to define and receive notifications based on business rules before incidences take place. The video feed is analyzed in real time for the detection of incidents:

- ▶ **Line Crossing:** Keeps authorities and security officers connected to remote locations, whereby they are notified whenever an individual or vehicle passes a virtual line. It is mainly used at low- or no-traffic entry and exit ways.
- ▶ **Intrusion:** Intrusion attempts are detected according to predefined rules, and alarms are triggered upon unauthorized attempts for entry. It is mainly used at government offices, construction sites, energy refineries, and other locations with critical and restricted zones.
- ▶ **Unattended Baggage:** Notifications are sent whenever baggage or unknown objects are left unattended for a specified time. It is used in airports, hotels and shopping centers.
- ▶ **Object Removal:** Protected and valuable objects are sketched and monitored. A notification is triggered once monitored objects have been removed. It is mainly used in museums, galleries, banks, factories, governments and military premises.



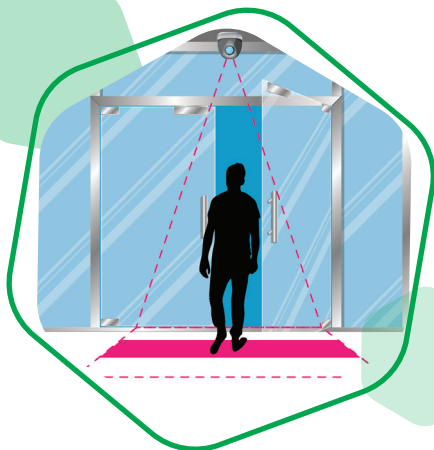
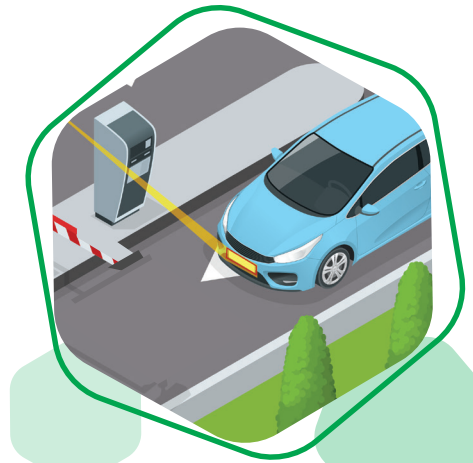
## Artificial Intelligence: Getting Closer to the Future

Artificial Intelligence has become the new human eye when it comes to surveillance and detection, whether it was a human, vehicle or object. It is far beyond from following instructions and raising alerts to personnel but rather building its own analysis by deep learning and analyzing new behaviors and patterns based on different incidences and occasions. With deep learning and behavioral analysis, the software provided by GET Group is capable of detecting undefined threats and alerting a predefined list of users.



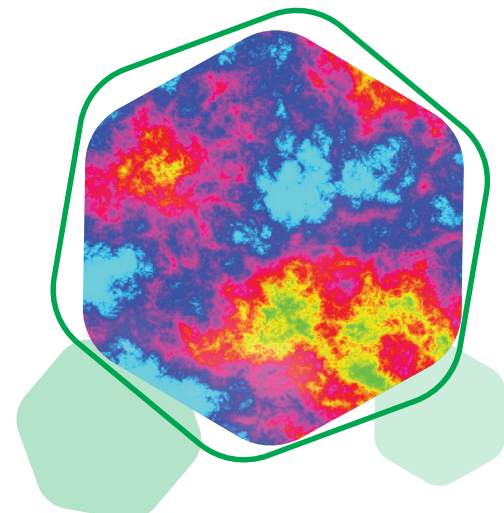
**Face Recognition:** An additional level of security based on AI capabilities, by which the faces of individuals are identified and tracked, even among large groups of people and during movement. The technology leverages advanced algorithms for biometrics capturing and face recognition that enables security officials to quickly and efficiently detect threats and suspicious behavior at critical sites. With machine-learning capabilities and configurable notifications, this technology is a formidable security measure against intrusions and security threats.

**Smart Plate Number Capturing (ANPR/LPR):** Vehicle number plates are captured, processed and identified using an AI- and machine learning-based engine capable of reading the most complex plate numbers in different light and weather conditions. With industry-leading accuracy, the engine processes GCC and MENA license plates, including Arabic and Latin characters of different colors. The system is additionally capable of identifying different plate types, such as private vehicles, taxi cabs and public transportation, government vehicles, and other types. This technology enables mobile or stationary surveillance deployments to read and store the license plates of passing and parked vehicles, comparing them against security databases and blacklists for a wide variety of applications.



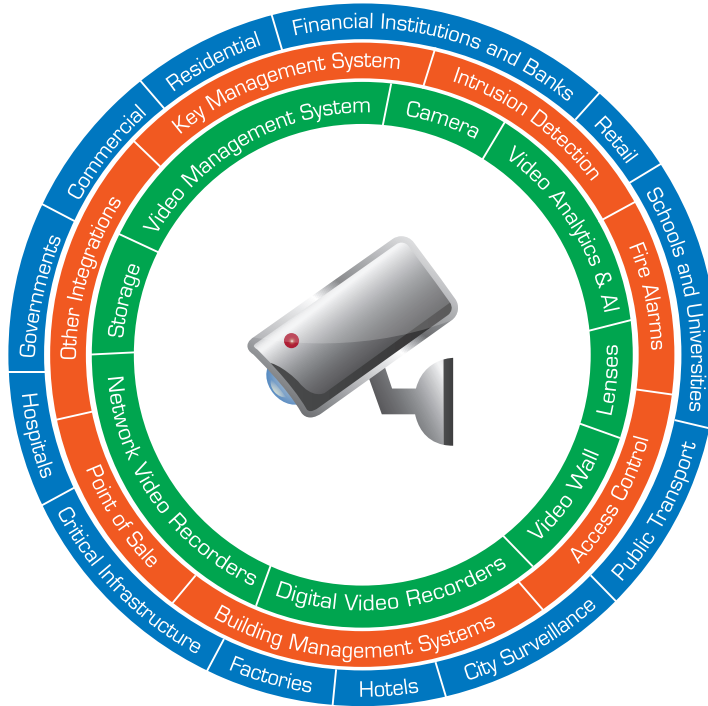
**People Counting:** For the monitoring of access and exit points, enabling venues such as shopping centers, hotels, museums, stadiums as well as events to count the number of people within different facilities at any given time. This technology is especially useful for the management of capacity-specific venues, where the administration can benefit from statistical and analytical reports of various detail levels to increase the volume of actionable data.

**Heat Mapping:** Boosts business intelligence and facilitates sustainability through a geographical video representation of people's movement in different colors according to density and time spent in specific locations; which can be interpreted into behavioral models and interaction insights. With this in place, retailers will be able to restructure the store layout based on the customer behavior.



## Integration

As a leading systems integrator, GET Group ensures that the software and hardware components of its solutions are seamlessly integrated with existing and third-party infrastructure, thus enabling clients to implement the solutions they require at low acquisition and operational costs. As the application landscape expands and becomes more complex and entangled, GET Group guarantees interoperability, compatibility, zero downtime, and continuous operations.



## WHY GET GROUP

